

May 2008

Inform Lot Billing /Showroom Room Locator Overview

What is Lot Billing?

When quoting contractors for large projects, inform lot billing lets you give them one price on the entire lot, or individual lot prices for rough-in or finished goods. Quoting items in this manner prevents customers from shopping around and pricing goods individually, increasing your sales volume and improving your profit margins.

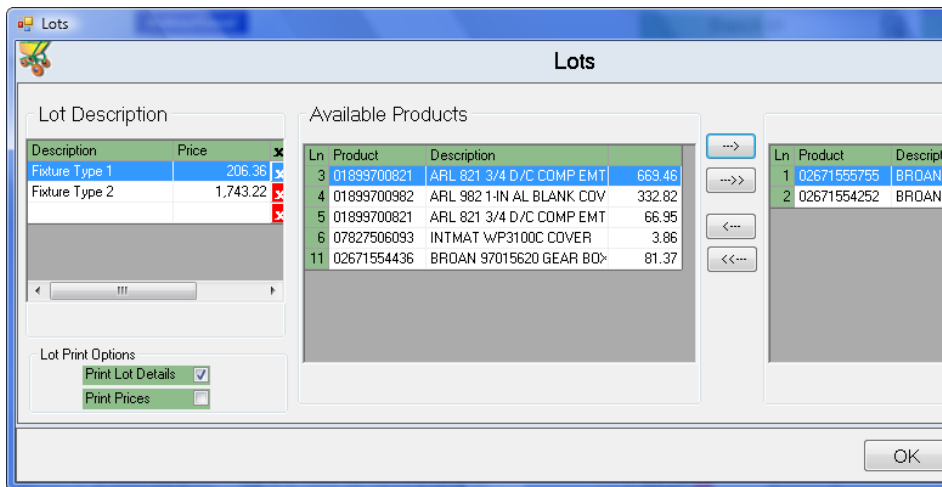
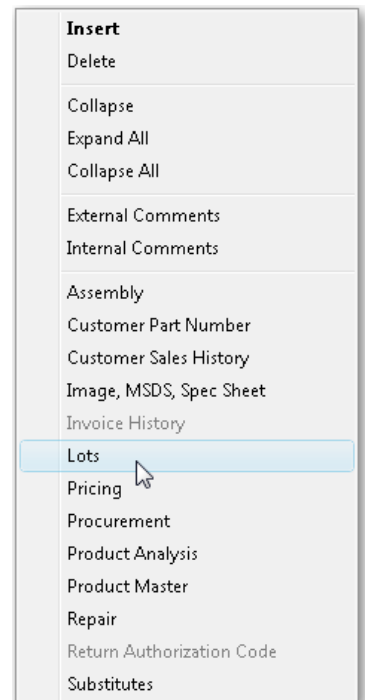
What are Room Locators?

When showrooms or distributors build quotes and orders that refer to plans or architect drawings, line numbers, drawing references, or room name identifies the plans fixtures. Inform Room locators lets you use these references in your quotes and sales orders, identifying items for pricing, labeling, delivery and invoice documents

How does inform manage Lot Billing and Room Locators?

After entering the project items in a Price Quote or Sales Order, right click on an item and select Lots from the context menu.

Establish lot names and assign items to these lots. Determine printing options for your lots; Print or suppress item descriptions, and print or suppress item prices:



Quote / Order Screen view

Lots or room locations are designated and subtotaled on the Quote / Sales order screen

Ln	Product	Description	Quant Ordered	Quant UM	
1	78626182113	LC200M LIGHTING CONTROLLER NEMA TS2 standard 3 cycle lengths 1 signal plan 2 splits per dial preempt capability 3 offsets per dial 2 actuated inputs This Item is NON-STOCK	10	EA	x
2	78626197641	TORK TA875-1G1 ELECTRONIC SIG This Item is NON-STOCK Lot: Fixture Type 1	10	EA	x
3	65073733400	FAN CVS-400A MULTI-PORT This Item is NON-STOCK Lot: Fixture Type 1	10	EA	x
4	01899700821	ARL 821 3/4 D/C COMP EMT CONN Lot: Fixture Type 1	50	C	x
Fixture Type 1: \$4,006.17					

Pricing

Distributors quoting large projects may need to separate invoice amounts from the actual quantities and prices of product they are shipping. Inform accepts lot price adjustments to front-load (or back-load) lot billing,

Add non-printing price adjustment items to any lot.


5	SP	*LOT Gross Profit is below minimum Lot: Fixture Type 1	1	EA	x
Fixture Type 1: \$7,746.54					

Use 'SP' as your product number, then *LOT as the item description. These items will be hidden on all printed forms

The invoiced value of a lot is initially determined by the items in a lot. Use hidden adjustment entries to increase or decrease the invoiced price of a lot, or to invoice more than is being delivered currently. Make subsequent adjustments to reverse front or back-loaded billing

Forms

Price Quote, Sales Order, Order Confirmation, Ship Confirmation, and Invoice forms are all enhanced to handle lot billing and room locator printing layouts

		TEL: 203.364.1200 FAX: 203.364.1400 75 Glen Road • Suite 204 Sandy Hook, CT 06482 www.ddisys.com	<p>PRICE QUOTE</p> <p>Page 1 Printed 05/19/08 AM</p>			
<p>Quoted</p>		<p>Ship To</p>				
Stone Electric 9331 Pleasant Point Road Brookville KS 54879 Tel:203-364-1200 Fax:203-364-1400		SHOP 9899 WESTBROOK ROAD BROOKVILLE OH 45309				
Quote #	Quote Date	Exp Date	Customer #	Customer P/O #	Ship Via	Writer
Q000002	05/13/2008	06/12/2008	0017017	Lot demo		AW
Job ID	Customer Terms			Salesman		
21-452-62	2% 10TH PROX NET 25TH			15		
Product	Description	UM	Quant	Unit Price	Disc%	Extension
	Fixture Type 1	
78626182113	LC200M LIGHTING CONTROLLER NEMA TS2 standard 3 cycle lengths 1 signal plan 2 splits per dial preempt capability 3 offsets per dial 2 actuated inputs	EA	10			
78626197641	TORK TAB75-1G1 ELECTRONIC SIG	EA	10			
65073733400	FAN CVS-400A MULTI-PORT VENTILATION	EA	10			
01899700821	ARL 821 3/4 D/C COMP EMT CONN	C	50			
02671554436	BROAN 97015620 GEAR BOX	EA	1			
	Total: Fixture Type 1		7,746.54